



SG DefectScan

**EXCLUSIVE PROMO
FOR
PRIVATE / LANDED
UNITS**



CHAT HERE

OUR PACKAGES

- 1 INSPECTION + REPORT

1 - 600 sqft	\$200
601 - 1000 sqft	\$235
1001 - 1300 sqft	\$335
1301 - 1700 sqft	\$400
1701 - 2000 sqft	\$500
Above 2000 sqft	\$0.25/sqft

- 3 INSPECTION + REPORT

1 - 600 sqft	\$315
601 - 1000 sqft	\$335
1001 - 1300 sqft	\$435
1301 - 1700 sqft	\$500
1701 - 2000 sqft	\$600
Above 2000 sqft	\$0.30/sqft



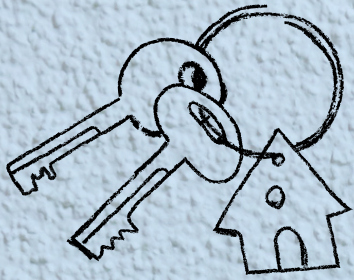
+65 8776 6987



@sgdefectscan



www.sgdefectscan.com



INSPECTION PACKAGE DETAILS

1. Initial inspection that comes with defect report in Developer format (1 trip)
2. Joint inspection with Main Contractor to run through all defects (3 trips)
3. Closing inspection after BSC rectification

ADDITIONAL INFO

1. Top up differential to upgrade your inspection package at any point
2. Additional follow up inspections @ \$90 nett only
3. Above prices will take effect upon confirmation of 1 resident from the estate





SCOPE OF WORKS

Architectural, Electrical and Plumbing checks for workmanship, functionality and finishing issues for whole unit accessible areas; in accordance to BCA guidelines:

- Electrical points, switch points, appliances and aircon system
- Plumbing, sanitary matters and drainage including water ponding/flow testing
- Floor, walls, ceilings, including water leak, seepage, lippage, unevenness
- Carpentry - Cabinet and wardrobe works (2rm flexi units)
- Doors, Windows, fixtures & fittings checks for finishing and functionality
- Tile hollowness, delamination, chips and scratches
- General aesthetic defects and misalignment issues

FYI RESIDENTS 🤔

DLP period is valid for 12 months from Key collection date.

You are required to report any defects BEFORE commencing renovation/moving in.

Get the defects rectified by Developer at 'No Cost'

SP Services (water and electricity supply) is recommended to be switched on before our inspections so we can inspect the water and electrical items i.e waterponding test, water pressure test, electrical switches and sockets testing.

If there are any new defects discovered after moving in / after DLP period...

FRET NOT! Take a picture and send it to us for free consultation.

This is our commitment to all our recurring customers!

